

Adaptive traffic control

Let your streets adjust to the current traffic situation.

Smart cities understand the needs of their citizens. Optimize traffic flow and prevent collisions thanks to the real-time FLOW framework.



Designed for multimodal traffic

The FLOW framework is able to track down and react to the movement of every road user, including cyclists and pedestrians.



Multipurpose detection

FLOW is a universal sensor for a range of applications including detecting red light violations, blocking vehicles, U-turn movements, or gathering traffic counts.



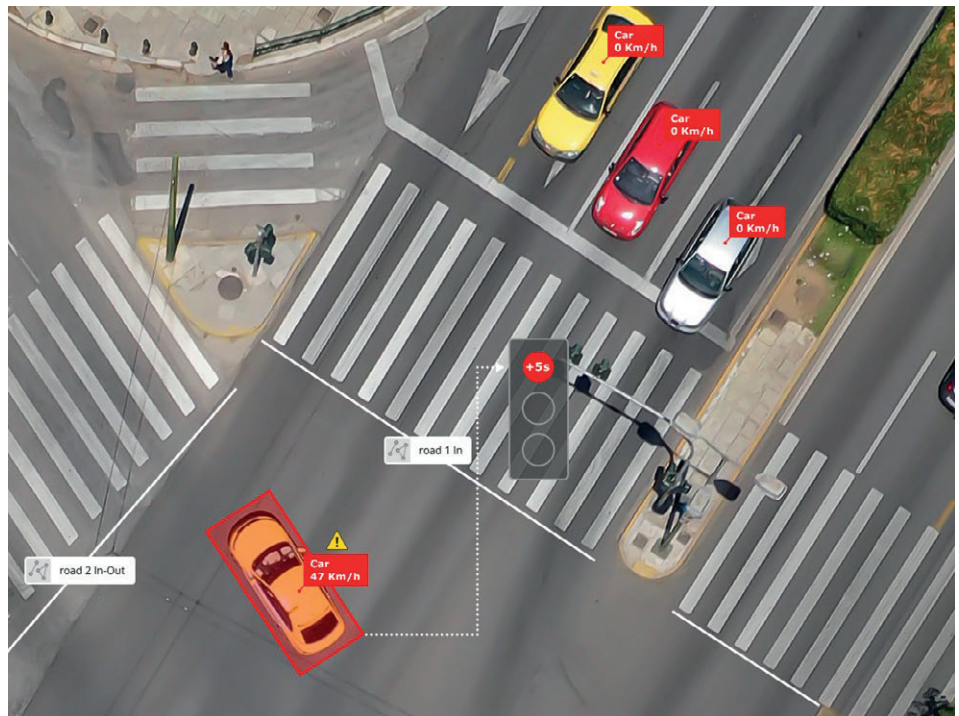
Cost effective & flexible solution

FLOW is a non-intrusive solution that dramatically reduces installation time and costs while fitting any junction layout.

Adaptive traffic lights

Forget about old-fashioned induction loops – **use smart video data instead.** FLOW allows you to optimize the traffic influx based on the current level of service. Improve dilemma zone safety, implement signal priorities and green light extensions whenever needed.

Reduce drivers' waiting time and make them reach their destination faster. Additionally, smoother traffic flow helps to cut down emissions, resulting in **less pollution.**



Smart traffic signs

Improve road safety and save costs at the same time. Utilize **adaptive traffic signs** that react to the current traffic situation. Inform the drivers about estimated travel time and current traffic events via smart LED signs. **Warn motorists about upcoming congestion**, guide them with LED enhanced delineation or smart parking signs and prevent dangerous wrong way driving.

Protection of vulnerable road users

More than 720 000 pedestrians and cyclists die on roads each year. Many of those deaths can be prevented by better safety measures.

With FLOW, you can easily detect oncoming bikes or pedestrians near road crossings. **Inform the drivers in time** by LED enhanced signs and crosswalks and **avoid collisions.** Help save lives.

